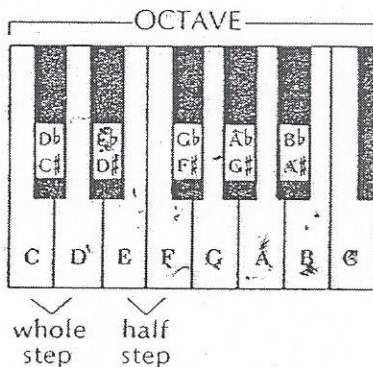


LESSON 29 WHOLE AND HALF STEPS

Tones of the scale are separated by whole and half steps which are easily seen on a piano keyboard.



Adjacent piano keys are a half step apart; therefore, E to F is a half step while C to D, which includes C# (two keys or two half steps), is a whole step. You will notice that the black keys get their names from the white keys. Each black key has two names. When going up the keyboard, the black keys are a half step higher than the white keys and are called by their sharp names—C, C#, D, D#, etc. When going down the keyboard the black keys are a half step lower than the white keys and are called by their flat names—B, Bb, A, Ab, etc. Although the black keys have two names, they have only one sound. Two notes that sound the same but are written differently are called ENHARMONIC notes.

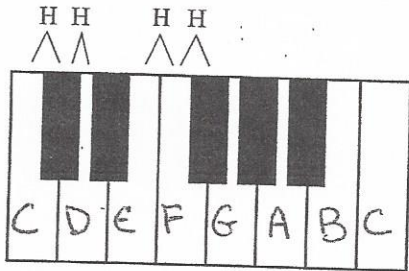
1. Name the notes and indicate if the distance between the first and second notes is a whole step (w) or a half step (1/2).

2. Name the notes and indicate the distance between them.

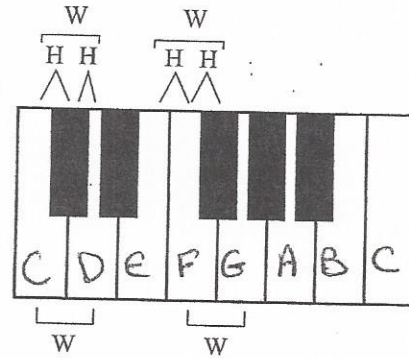
3. Indicate the distance between the notes.

Half Steps and Whole Steps I

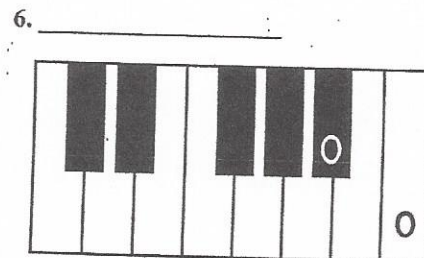
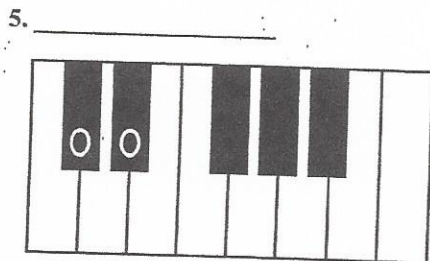
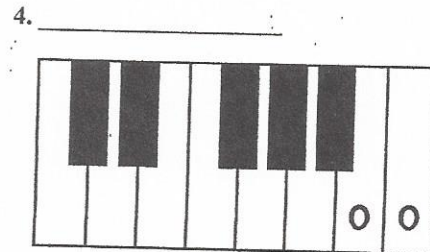
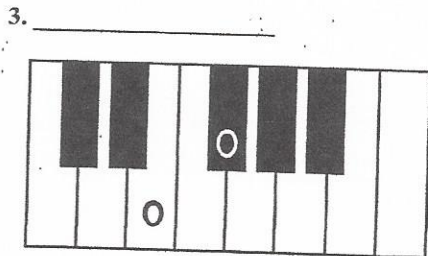
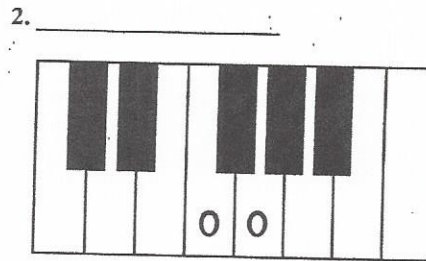
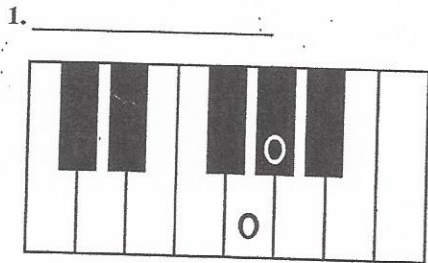
The **half step** (H) is the smallest interval used in traditional Western music. The piano keyboard is arranged in half steps; the distance between two adjacent keys on the piano is a half step.



The **whole step** (W) is an interval made by combining two half steps.



Using the keyboards below, write the interval (whole step or half step) that is created by the Os.

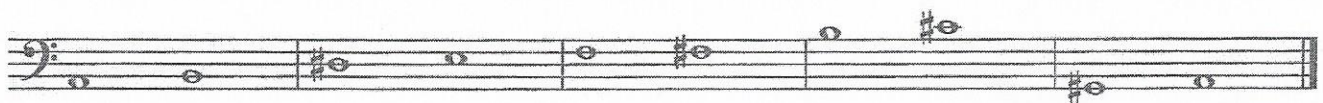
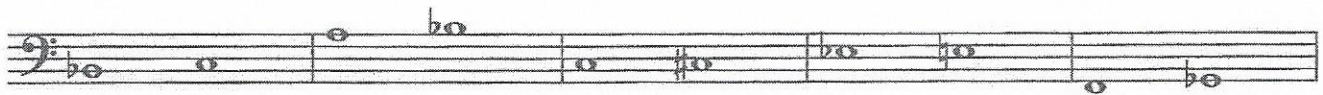


Sharps, Flats and Naturals - Half Steps and Whole steps WORKSHEET

COVER THE ANSWERS BELOW.

Identify each example as a half step (HS) or Whole Step (WS):

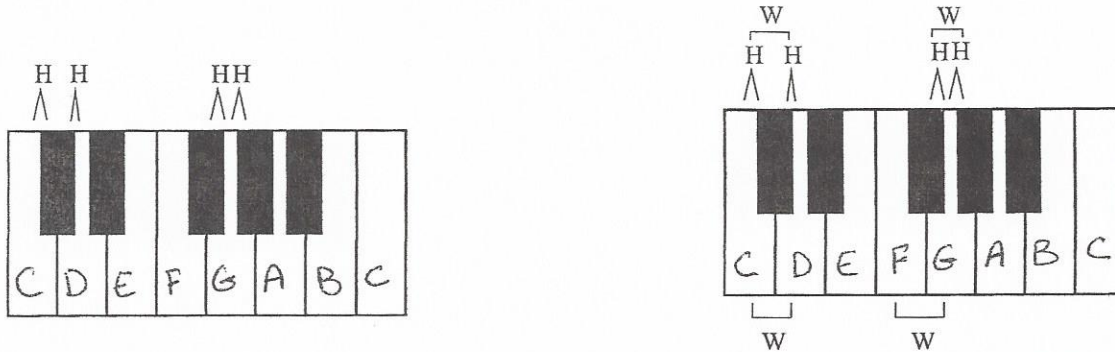
Name the notes



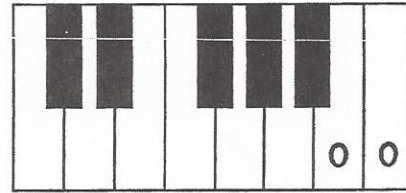
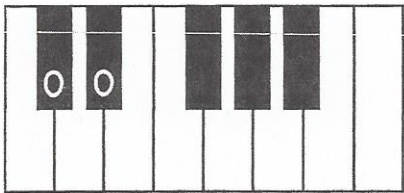
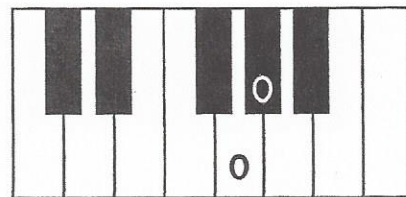
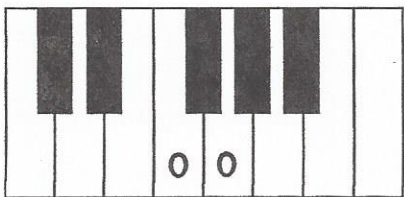
Lesson 18: Half Steps and Whole Steps

The **half step** (H) is the smallest interval used in traditional Western music. On a piano keyboard, a half step is represented by two adjacent keys.

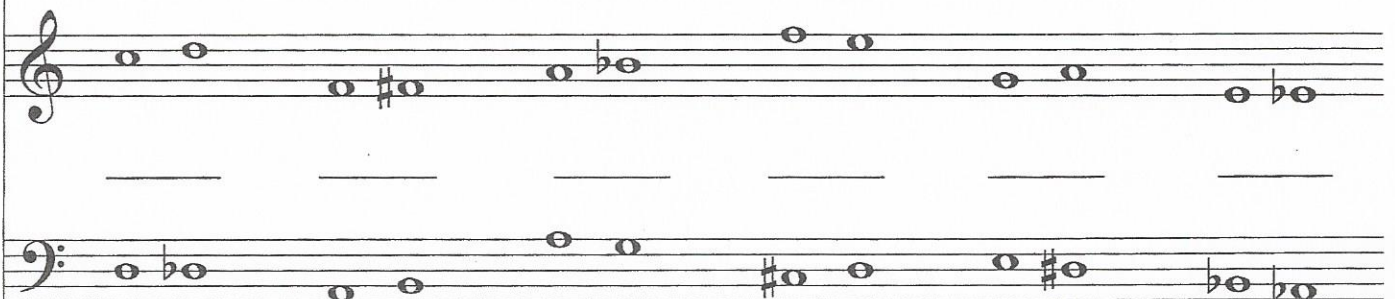
The **whole step** (W) is an interval made by combining two half steps.



1. On the line beneath each piano keyboard, write whether the interval indicated by the Os are a half step (H) or whole step (W).



2. On the line, write whether the pair of notes represents a half step (H) or whole step (W)





Color the candies with half steps yellow and whole steps green.

